

THE FOLDABLE TELESCOPIC CRANES EXPERTS



Fixed



Telescopic



Knuckle - Telescopic



Fully foldable



Knuckle



Truck

Power | Passion | Partnership



Our cranes are synonymous with safety, soundness, compactness, light weight and low operation costs.

HEILA CRANES GROUP:

Heila Cranes SpA in Italy
Heila Cranes Nederland BV in The Netherlands

HIGHLIGHTS:

- ▶ Over 45 years of experience
- ▶ Over 5,500 marine cranes engineered and manufactured
- ▶ 220 cranes certified by class in the recent years
- ▶ Outstanding in-house engineering capability



Focus on our customer

Heila cranes focuses on establishing long-term relationships with its customers, proactiveness, and technical reliability. With energy and passion. In practice this means engineering and manufacturing the most reliable custom-built marine and offshore cranes, with capacities ranging from 3 up to 1,500 tm. Always in cooperation with our customers. Always striving to find the best solution.

MISSION

We supply the most reliable cranes to our customers in the marine and offshore industry. We aim to satisfy their every need with respect to deck cranes among our range.

"Quality, reliability and service are Heila's unique selling points. The company has gathered together a group of true professionals who are reliable and skilled"

Neptune Shipyard BV

"We prefer quality cranes for our vessels and value at the same time a good understanding and relationship with our suppliers. No problem for Heila: our long-term cooperation with Heila proves this. The new Heila will emerge"

Damen Shipyards, Hardinxveld

FOUNDED IN ITALY, WITH WORLDWIDE PRESENCE

Heila Cranes has service, sales and dealer hubs throughout the world. This makes it possible to provide our customers with an optimal service. Check our website for a Heila representative in your area.



Heila Foldable Telescopic Cranes: the HLM and HLRM series

Heila is specialized in foldable telescopic cranes that are of superior quality. This is the result of more than 45 years of experience and technical expertise in designing, producing components and developing the manufacturing process to meet the highest quality standards.

Facts:

- more than 3,300 foldable telescopic cranes manufactured and delivered
- market leader in foldable telescopic cranes
- first to produce a HLRM 1000 crane; a 70-ton crane featuring a telescopic arm with a maximum reach of 30 m that is very compact in storage position.



Features:

- Originally designed for a marine environment
- Light weight
- Safe & Reliable
- Easy operation
- Easy maintenance
- Robust and compact



Heila Anti-Corrosion Program

HEILA Anti-Corrosion Program, applied on all the cranes we manufacture, ensures that the cranes have a long life in the harsh environment they are daily called to work.

- Complete Surface Treatment: structural design, steel preparation, rounded edges and painting process compliant with ISO 12944-C5M
- High-durability, nickel-chrome or double crossed plated for hydraulic cylinder rods or Nikrom as option.
- Structural bolts coated with Geomet 500 gr.B
- Other screws and bolts made in stainless steel A470 protected with silicone.
- Pins in High strength stainless steel AISI 630
- Hydraulic fittings made in galvanized carbon steel, further protected by a film of corrosion resistant inhibitor and covered with special vulcanised rubber tape.
- Rigid pipes and relevant fittings in AISI316 stainless steel.
- Gear boxes, motors, hydraulic manifolds and components painted compliant ISO 12944-C5M and further protected by a film of corrosion resistant inhibitor.
- Stainless Steel AISI 316 and IP66 for junction boxes and encoders



HEILA Extreme Anti-Corrosion Program [HD 4+]

When the Cranes needs further protection from the marine environment, HEILA has the following dedicated solutions provided as a package called HD4+, that adds the following.

- Rod of cylinders protected with a high hardness special treatment which guarantees: excellent adhesion to the substrate, microcrack free, no porosity, excellent elasticity, very small roughness, rust free time NSS > 2500 hr.
- Hose fittings in AISI 316L.
- Electric components inside JB protected by silicon spray.
- Steel structure metallization according to Norsok 2B, is available as option.

HLM CRANES:

Fully foldable telescopic cranes with rack and pinion slewing system



HLM 25/3S

The HLM cranes with their rack and pinion slewing system are very compact and light. This makes the HLM type ideal for use on small vessels, especially where space is limited. Cranes of this type, our ‘workhorses of the sea’, are indispensable for auxiliary vessels including multifunctional work boats, tugs and pontoons.

CHARACTERISTICS

- The crane is able to work in any configuration; with boom extended upwards or folded downwards offering great manoeuvrability
- Rotation up to 360°. This is possible because the crane is fitted with a double rack and pinion system with bronze bushes that guarantees safe operation, even at higher heel and trim angles.

CONTROL AND SAFETY

- Stationary fixed control console
- Counterbalance valves directly mounted on each cylinder provide a fast response
- Proportional Electrohydraulic Control Valve Block with internal compensation for simultaneous movements and self-centring manual levers; supplied by primary world-wide producers
- Electrohydraulic load moment limiting device; prevents the crane being overloaded and damaged.

STRONG AND RELIABLE

Doubling the number of racks and cylinders doubles the power of the slewing system. Moreover, the life of these components is extended because the load is shared.

CUSTOMISATION

The HLM crane series is standardised, however, there are a surprising number of options allowing a full customisation.

HORIZONTAL LOAD HLM CRANES

Crane model	nr of extensions	HEILA Cranes STANDARD Products Table											
		3 m	4 m	5 m	6 m	7 m	8 m	9 m	10 m	11 m	12 m	13 m	14 m
HLM 3	1 S	m 3.51		5.18									
		Kg 1,110		750									
	2 S	m 3.62		5.29	6.96								
		Kg 1,030		680	500								
HLM 6	1 S	m 3.54		5.25									
		Kg 1,710		1,160									
	2 S	m 3.66		5.33		7.00							
		Kg 1,460		1,000		760							
	3 S	m 3.60		5.24	6.88		8.62						
		Kg 1,390		910	670		530						
HLM 8	1 S	m 4.17		5.82									
		Kg 2,330		1,680									
	2 S	m 4.25		5.85		7.43							
		Kg 2,110		1,520		1,200							
	3 S	m 4.34		5.96		7.60		9.27					
		Kg 1,780		1,250		950		770					
HLM 10	1 S	m 4.64			6.54								
		Kg 2,310			1,650								
	2 S	m 4.69			6.55		8.41						
		Kg 2,280			1,620		1,260						
	3 S	m 4.80			6.65		8.51		10.30				
		Kg 2,120			1,440		1,140		940				
HLM 16	1 S	m 4.94			6.94								
		Kg 3,440			2,460								
	2 S	m 4.96				7.02		9.03					
		Kg 3,350				2,190		1810					
	3 S	m 5.01				7.01		9.01		11.00			
		Kg 3,090				2,150		1,640		1,330			
HLM 25	2 S	m 4.68			6.65		8.62						
		Kg 5,170			3,640		2,820						
	3 S	m 4.81			6.76		8.73		10.58				
		Kg 4,940			3,470		2,660		2,200				
	4 S	m 4.94			6.89		8.86		10.72		12.64		
		Kg 4,700			3,280		2,490		2,020		1,710		
	5 S	m 5.04			6.99		8.96				12.82		14.72
		Kg 4,520			3,100		2,320				1,450		1,200



Data in de table are for harbour conditions

Horizontal loads, lifting by hook in harbour conditions. For the minimum outreach, please check the technical data sheet. HLM cranes can also work offshore.



Features:

- Originally designed for a marine environment
- One (1) cylinder for multiple telescopic movements
- Designed for easy maintenance
- High degree of customisation
- Cranes equipped with winch is possible, please contact our sales department

HLRM CRANES:

Fully foldable telescopic cranes & Foldable knuckle telescopic cranes



Fully foldable telescopic



Knuckle telescopic boom crane, HLRM 580/3S

HLRM cranes featuring slew bearings and continuous rotation, are available as fully foldable telescopic cranes and as knuckle telescopic boom cranes.

THE BEST LIFTING PERFORMANCE

The fully foldable telescopic cranes are designed to provide the best lifting performance combining exceptional boom strength with a powerful slewing ring rotation system. The cranes are suitable for a wide range of on-board and off board activities including buoy handling and the hoisting of structures and equipment.

NO COMPROMISE ON QUALITY

Heila provides all of the features and uses quality components to construct cranes that offer excellent performances. The cranes are designed for the tough environmental conditions at sea. We protect all of our cranes – big and small - by thoroughly sand blasting them, applying marine paint systems and using stainless steel pipe fittings.

HEAVY DUTY OPERATION

Each crane component is selected and designed for heavy duty operation in a marine environment, they feature:

- Heila Anti-Corrosion Program
- Standard design temperature -20°C +45°C
- Minimum IP 56 protection standard on all electric cabinets and junction boxes on the crane
- Electronic Safety System protects the crane from being overloaded

ALWAYS PUSHING THE ENVELOPE

Starting from the first development of Heila knuckle telescopic boom crane, Heila has always strived to build bigger and better cranes. Heila was the first to build many of the larger cranes of this type, culminating in the HLRM 1000-6S in 2018.

This crane is able to lift 14,300kg at a reach of almost 30m and 52,500kg at 13.4m.

Despite its small footprint, it is a high-capacity crane. In combination with various options, including Active Heave Compensation (AHC), AOPS, MOPS, this crane is a cost-effective, highly versatile but compact tool, suitable for many offshore activities, thus greatly reducing mobilisation time of vessels. It is the offshore equivalent of a big Swiss army knife.

Fully foldable telescopic cranes with slewing bearing system

HORIZONTAL LOAD HLRM CRANES

Crane model	nr of extensions		HEILA Cranes STANDARD Products Table																Revision – 1 Juni 2024				
			Length of boom (m) and crane lifting capacity (kg)																				
			4m	5m	6m	7m	8m	9m	10m	11m	12m	13m	14m	15m	16m	17m	18m	19m	20m	21m			
HLRM 25	2S	m	4.68		6.65		8.62																
		Kg	5,170		3,640		2,820																
	3S	m	4.81		6.67		8.73		10.58														
		Kg	4,940		3,470		2,660		2,200														
	4S	m	4.94		6.89		8.86		10.72		12.64												
		Kg	4,700		3,280		2,490		2,020		1,710												
	5S	m		5.05	6.99		8.96		10.82		12.82		14.72										
		Kg		4,520	3,100		2,320		1,850		1,450		1,200										
	HLRMH 25	2S	m	4.55		6.3		8.15															
			Kg	6,150		4,420		3,200															
		3S	m	4.68		6.43		8.28		10.23													
			Kg	5,800		4,100		3,100		2,400													
4S		m	4.8		6.55		8.4		10.35		12.4												
		Kg	5,560		3,850		2,900		2,200		1,730												
	5S	m	4.92		6.67		8.52		10.47		12.52		14.63										
		Kg	5,250		3,650		2,680		1,910		1,460		1,190										
	6S	m		5.03	6.78		8.63		10.58		12.63		14.74		16.9								
		Kg		5,000	3,400		2,400		1,750		1,320		1,050		880								
	HLRM 35	2S	m		5.21		7.18		9.15														
			Kg		5,780		4,170		3,270														
3S		m		5.31		7.26		9.22		11.08													
		Kg		5,480		3,940		3,050		2,520													
3SL		m		5.60		7.80			10.01		12.21												
		Kg		5,150		3,600			2,750		2,240												
4S		m		5.41		7.36		9.33		11.18		13.1											
		Kg		5,320		3,800		2,930		2,370		2,010											
5S		m		5.51		7.46		9.43		11.28		13.3		15.18									
		Kg		5,150		3,670		2,820		2,300		1,900		1,610									
5-SL	m		5.52		7.72		9.93			12.13		14.33		16.49									
	Kg		5,010		3,410		2,540			2,100		1,600		1,330									
HLRM 45	2S	m	4.89		6.86		8.83																
		Kg	8,210		5,870		4,570																
	3S	m		5.02	6.97		8.93		10.79														
		Kg		7,740	5,490		4,220		3,470														
	4S	m		5.14		7.09		9.05	10.91	12.83													
		Kg		7,580		5,410		4,170	4,170	2,580													
	5S	m		5.23		7.18		9.15		11.01		13.01	14.91										
		Kg		7,290		5,170		3,790		2,860		2,250	1,880										
	5SL	m		5.47		7.67		9.88			12.08		14.10		16.08								
		Kg		6,710		4,570		3,170			2,300		1,830		1,520								



Data in de table are for harbour conditions

Horizontal loads, lifting by hook in harbour conditions
For the minimum outreach, please check the technical data sheet.

Features:

- Originally designed for a marine environment
- Continuous slewing
- Designed for easy maintenance
- High grade of customisation
- Cranes equipped with winch is possible, please contact our sales department



Crane model	nr of extensions		Length of boom (m) and crane lifting capacity (kg)												HEILA Cranes STANDARD Products Table							Revision – 1 Juni 2024							
			4m	5m	6m	7m	8m	9m	10m	11m	12m	13m	14m	15m	16m	17m	18m	19m	20m	21m									
HLRM-I 45	2S	m	4.63		6.13	7.93																							
		Kg	9,800		7,500	5,800																							
	3S	m	4.71		6.21		8.06	9.96																					
		Kg	9,500		7,200		5,550	4,200																					
	4S	m	4.73		6.23		8.08		10.02		12.04																		
		Kg	9,300		7,000		5,350		4,000		3,100																		
	5S	m	4.82		6.32		8.17		10.11		12.13		14.31																
		Kg	9,000		6,800		5,100		3,800		2,900		2,350																
	6S	m	4.91		6.41		8.26		10.2		12.22		14.39		16.66														
		Kg	8,700		6,550		4,900		3,650		2,780		2,190		1,800														
	7S	m		5.01	6.51		8.36		10.3		12.32		14.49		16.76			19.03											
		Kg		8,400	6,300		4,700		3,450		2,600		2,000		1,630			1,380											
	8S	m		5.12	6.62		8.47		10.41		12.43		14.6		16.87			19.14		21.04									
		Kg		8,150	6,150		4,600		3,250		2,415		1,865		1,500			1,235		1,080									
HLRM 65	2S	m	4.65		6.55		8.4																						
		Kg	13,720		9,920		7,820																						
	3S	m	4.77		6.67		8.67		10.67																				
		Kg	13,190		9,520		7,350		5,850																				
	4S	m	4.86		6.76		8.76		10.76		12.76																		
		Kg	13,230		9,490		7,260		5,450		4,360																		
	5S	m	4.95		6.85		8.85		10.85		12.85		14.85																
		Kg	13,410		9,620		7,070		5,220		4,140		3,440																
	6S	m		5.04	6.94		8.94		10.94		12.94		14.94		16.94														
		Kg		13,610	9,790		7,130		5,250		4,150		3,430		2,940														
	6SL	m		5.52		7.82			10.2		12.58		14.98			17.38		19.78											
		Kg		12,300		8,420			5,600		4,030		3,130			2,560		2,180											
HLRM-I 65	2S	m	4.51		6.01	7.76																							
		Kg	15,500		12,000	9,200																							
	3S	m	4.55		6.05	7.91		9.81																					
		Kg	15,000		11,500	8,800		6,400																					
	4S	m	4.65		6.14		8	9.9	11.9																				
		Kg	14,500		11,000		8,400	6,200												4,900									
	5S	m	4.75		6.26		8.1		10		12		14																
		Kg	14,000		10,500		8,000		6,000		4,600		3,750																
	6S	m	4.87		6.37		8.21		10.12		12.12		14.12		16.27														
		Kg	13,300		10,100		7,700		5,600		4,300		3,500		2,900														
	7S	m	4.97		6.48		8.32		10.23		12.23		14.23		16.37		18.64												
		Kg	13,000		9,800		7,500		5,500		4,200		3,400		2,750		2,350												
8S	m		5.13	6.6		8.43		10.33		12.32		14.33		16.48		18.75		20.64											
	Kg		12,000	9,200		7,000		5,000		3,800		3,000		2,500		2,200		1,900											
HLRM 90	3S	m	4.72		6.62		8.62		10.62																				
		Kg	17,910		12,990		9,720		7,330																				
	4S	m	4.82		6.72		8.72		10.72		12.72																		
		Kg	17,390		12,550		9,370		7,000		5,620																		
	5S	m	4.93		6.83		8.83		10.83		12.83		14.83																
		Kg	17,070		12,290		9,110		6,760		5,390		4,500																
	6S	m		5.02	6.92		8.92		10.92		12.92		14.92		16.92														
		Kg	16,530		11,930		8,430		6,240		4,950		4,110		3,520														
	6SL	m		5.32		7.42		9.62		11.82		13.82		15.82		17.82													
		Kg		16,970		12,060		8,020		5,910		4,760		3,980		3,430													

HLRM CRANES:

Foldable knuckle telescopic cranes with slewing bearing system



Leadership in foldable telescopic cranes

Heila, with its HLRM series, is the market leader in foldable knuckle telescopic boom cranes. We design, develop and deliver our HLRM cranes as standard cranes or completely custom made. The entire range from small to big cranes is available and can be delivered quickly.

The HLRM crane is the perfect solution when high capacity is required and when deck space is limited. We develop solutions for customers in areas ranging from the fishing industry to

the offshore sector and other areas of the maritime sector.

Heila was the first company to supply a 340 tm knuckle boom telescopic crane. It was also the first to supply a HLRM 460 tm dredging crane and the first to supply a HLRM 580 tm crane. The natural next step was to break the 1000 tm barrier.

HLRM 1000-6SL

The company has supplied numerous sub-sea and active and passive heave compensation installations. Our HLRM 1000-6SL, a 70-ton foldable knuckle telescopic crane, will dramatically change the heavy-duty crane market. Even though it is equipped with a telescopic arm that can extend to a maximum radius of 30 metres, the crane only requires a limited space.

The HLRM 1000 features:

- Outreach up to 30 metres
- Lifting capacity up to 70 tons
- Compact crane in storage position
- Suitable for sub-sea application
- Designed and built for a harsh offshore and marine environment

Foldable knuckle telescopic cranes

with slewing bearing rotation system

HORIZONTAL LOAD HLRM CRANES

Crane model	nr of extensions		Length of boom (m) and crane lifting capacity (kg) HEILA Cranes STANDARD Products Table															Revision – 1 Juni 2024							
			5m	6m	7m	8m	9m	10m	11m	12m	13m	14m	15m	16m	17m	18m	19m	20m	21m	22m	23m	24m			
HLRM 80	2S	m	6.13		8.13		10.13																		
		Kg	15,040		11,430		8,350																		
	3S	m	6.32		8.32		10.32				12.32														
		Kg	14,450		11,020		7,910		6,180																
	4S	m	6.55		8.55		10.55				12.55				14.55										
		Kg	13,310		10,070		7,180		5,530		4,490														
HLRM 120	2S	m	6.09		8.09		10.09																		
		Kg	19,170		14,400		11,540																		
	3S	m	6.11		8.11		10.11				12.11														
		Kg	18,870		14,120		10,880		8,410																
	4S	m	6.3		8.3		10.3				12.3		14.3												
		Kg	18,040		13,500		10,720		8,260		6,730														
	3SL	m			7.55		10.1				12.66		15.21												
		Kg			14,670		10,680		7,960		6,090														
	4SL	m			7.76		10.31				12.87				15.42				18.07						
		Kg			13,960		10,110		7,430		5,610						4,480								
HLRM 140	3S	m	5.68	7.85		10.02		12.18																	
		Kg	25,030	18,380		13,270		10,320																	
	4S	m	5.87	8.04		10.21		12.37		14.42															
		Kg	23,130	17,030		12,220		9,480		7,850															
	5S	m	6.19	8.26		10.33		12.4		14.52		16.74													
		Kg	21,170	15,680		12,360		10,170		8,360		7,020													
	6S	m	6.31	8.37		10.45		12.51		14.63		16.85						19.06							
		Kg	20,550	15,230		11,980		9,830		8,040		6,730				5,730									
	3SL	m		7.51		10.06		12.62		-		15.17													
		Kg		18,460		13,740		10,930		-		8,640													
	4SL	m		7.70		10.21		12.37				15.36				18.01									
		Kg		17,030		12,640		10,010				7,870				6,380									
4SLK	m		7.69		10.24		12.8				15.35				18										
	Kg		17,140		12,730		10,090				8,170				6,640										
HLRM 170	2S	m	5.64	7.64		9.54																			
		Kg	27,950	18,200		13,440																			
	3S	m	5.88	7.95		10.01		12.08																	
		Kg	26,310	19,620		14,480		11,360																	
	4S	m	6.09	8.15		10.22		12.29		14.32															
		Kg	25,200	18,830		14,980		12,130		10,030															
	3SL	m		7.97		10.03		12.11		14.17															
		Kg		19,220		15,270		12,250		9,780															
4SL	m		8.16		10.22		12.3		14.36		16.39														
	Kg		18,450		14,630		11,620		9,230		7,700														
HLRM 200	2SL	m		7.58		9.75		11.93																	
		Kg		22,350		17,450		14,300																	
	3SL	m		7.6		9.77		11.94				14.1													
		Kg		21,950		17,050		13,900				11,800													
	4SL	m		7.82		9.99		12.16		14.32		16.37													
		Kg		20,750		16,050		13,050		11,000		9,600													
	18-4SL	m		8.49		10.84		13.20		15.55		18.05													
		Kg		22,430		17,170		13,700		10,570		8,540													
20-4SL	m		9.85		12.4		14.96		17.51		20.01														
	Kg		18,450		14,230		11,540		9,270		7,620														
HLRM 230	4SL	m		7.38		9.67		11.97		14.26		16.46													
		Kg		30,300		22,800		17,740		13,780		11,330													
	4SLK	m		7.44		9.73		12.03		14.32		16.52													
		Kg		28,360		21,350		17,020		14,140		12,180													



Data in de table are for harbour conditions
Horizontal loads, lifting by hook in harbour conditions
For the minimum outreach, please check the technical

Crane	nr of	Length of boom (m) and crane lifting capacity (kg) HEILA Cranes STANDARD Products Table	Revision - 1 Juni 2024
-------	-------	---	------------------------

model	extensions	5m	6m	8m	9m	10m	11m	12m	13m	14m	15m	16m	17m	18m	19m	20m	21m	22m	23m	24m	25m	26m	27m	29m	
HLRM 280	2SL	m			9.08			12.08			15.08														
		Kg			31.100			22.700			16.500														
	3SL	m			9.48			12.48			15.48			18.48											
		Kg			28.800			20.950			14.890		11.340												
	4SL	m				9.88			12.88			15.88			18.88			21.88							
Kg					26.680			19.290			13.370			10.000			7.970								
HLRM 340	1S	m			9.61			12.17																	
		Kg			20.000			20.000																	
	2S	m			8.69			11.25			14.09														
		Kg			26.000			20.000			15.000														
	3SL	m				9.57			12.47			15.47			18.47										
Kg					32.900			24.000			18.000			13.900											
HLRM 440	2S	m			8.69			11.25			14.09														
		Kg			37.000			27.100			20.500														
	3S	m				9.07			11.63			14.47			17.31										
		Kg				35.000			26.000			18.500			14.400										
	4S	m	5.71			9.54			12.08			14.47			17.69			20.60							
		Kg	55.000			44.900			28.500			18.500			15.200			12.300							
5S	m				9.54			12.09			14.84			17.69			20.60				23.35				
	Kg				43.600			27.700			19.200			14.600			11.800				10.432				
HLRM 460	2S	m				10.62			13.67			16.72													
		Kg				36.000			26.500			20.000													
	3S	m				10.98					14.03			17.08			20.13								
		Kg				32.000					23.000			18.000			15.900								
	4S	m				10.98					14.03			17.08			20.13				23.15				
Kg					31.100					22.300			17.500			14.600				13.000					
HLRM 580	1S	m																							
		Kg																							
	2S	m	6.32			10.59			13.63			16.70													
		Kg	65.000			45.500			33.800			26.800													
	3S	m				10.98					14.03			17.08			20.13								
		Kg				40.900					30.100			23.600			19.500								
	4S	m							12.80			15.85			18.90			21.95				25.00			
Kg								25.000			20.500			16.000			12.500				10.000				
5S	m						11.78			14.83			17.88			20.93			23.98				27.03		
	Kg					35.200			26.200			20.500			16.200			13.700				11.700			
HLRM 1000	2S	m						12.03		14.63			17.23												
		Kg							70.000		56.000														47.000
	3S	m							12.51			15.11		17.71	20.31										
		Kg							62.500			49.500		41.500	35.500										
	4S	m							12.96			15.56		18.16			21.76		23.46						
		Kg							57.000			44.500		37.500			31.500		26.500						
	5S	m								13.44			16.04		18.64			21.24		23.94			26.64		
Kg									52.500			41.500		34.000			28.500		23.100			19.800			
6S	m											16.55			19.15		21.75			24.45			27.15	29.85	
	Kg											33.200			26.400		21.700			17.800			15.300	13.500	
HLRM 1500	2S	m					11.00		13.20		15.60														
		Kg					83.000		69.550		58.128														
6S	m										15.20		17.23		19.60			22.03			25.23		27.00		
	Kg										41.200		32.800		26.970			22.030			19.000		16.800		



Features:

- Originally designed for a marine environment
- Especially suitable for high loads
- Continuous slewing
- High degree of customisation
- Cranes equipped with winch is possible, please contact our sales department

Cranes

The HR650 and HLRM440: our pride and joy!



HR650/25-2BJ

This crane is a favorite with our customers!

The knuckle boom makes it possible to increase the reach and lifting height, making this crane highly versatile. The ability to keep the tip of the boom close to the load in all positions reduces load sway. With the HR650 performing a wide scale of lifting activities is a piece of cake.

With the HR650/25-2BJ customers can easily lift 25 ton at 10m and 10 ton at 20 m. And in the process, the crane can be upgraded with options like AHC, AOPS and MOPS.



HLRM 440

Next up is our other popular crane, the HLRM440 serie. These cranes pack a punch while remaining compact and surprisingly lightweight for its size. The lifting capacities of the different types can be found on page 15.

Our HLRM440 cranes have been widely deployed throughout the Netherlands and the United States. With a maximum lift capacity of 55 tonnes and a reach of up to 23 m, this robust crane is our best-selling solution for customers seeking exceptional strength and a compact footprint.

The crane can be outfitted with personnel lifting capabilities, a winch, AOPS, and MOPS for increased versatility. Depending on the customer's needs, we can also supply the crane with a fully equipped operator cabin, radio control system, and HPU.

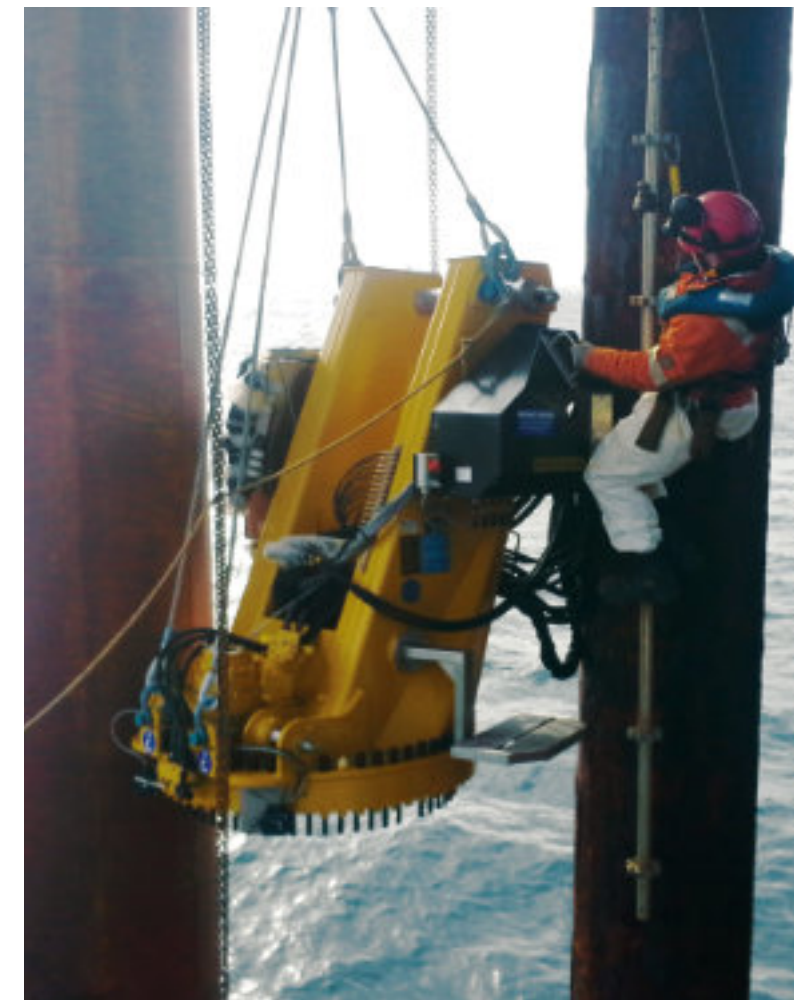
Services

Worldwide service

Cranes must be able to operate efficiently under the most diverse sea conditions. Wherever our customers may be, we ensure that their cranes remain operational.

Heila Cranes and its servicepartners are responsible for Heila's field services worldwide. We provide customers with technical support, on-site repairs, installation, commissioning and the complete refurbishment of their cranes. Furthermore, critical spare parts, such as cylinders, seal kits and electrical components for standard cranes are held in stock in Italy. When you buy a new Heila crane, we are available to provide you with information about our standard spare parts packages.

Heila Spareparts department supports the customers with a ticketservice providing support and feedback within 48 hours.

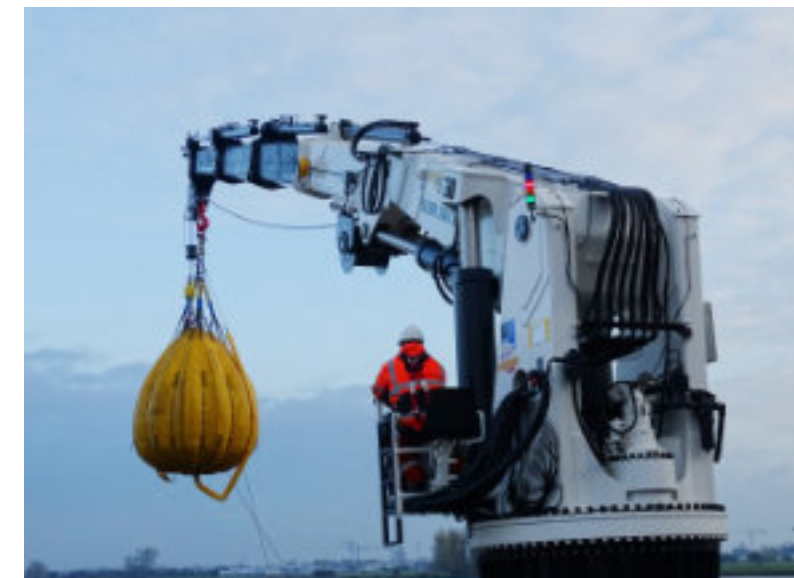


Refurbishment

The HEILA refurbishment program offers several types of refurbishment, ranging from component repairs, and the refurbishment of slewing gearboxes, control valve blocks, cylinders and winches to full crane refurbishments.

Benefits of refurbishment:

- Reduced downtime
- New warranty period
- Extended product life
- New anti-corrosion treatment



Options and Accessories for a broad level of customisation

Optional features for Heila cranes

DESIGN FEATURES

► CERTIFICATION & CLASSIFICATION

Our marine cranes comply with ISO 19354 "Marine Cranes – General requirements". If required, we can also meet the principal international standards for shipboard and offshore applications including EN13852-1 and API-2C. All cranes can be certified in accordance with the rules of international classification societies including:

- American Bureau of Shipping (ABS)
- Bureau Veritas (BV)
- China Classification Society (CCS)
- Det Norske Veritas – Germanischer Lloyd (DNV-GL)
- Lloyd's Register of Shipping (LRS)
- Registro Italiano Navale (RINA)
- Norwegian Maritime Authority (NMA)
- Russian Maritime Register of Shipping (RMRS)
- Others on special request

We use 3D CAD systems, verified ANSYS software and FEA techniques (Finite Element Analysis) to check and assure the structural integrity of our equipment.

► AUTOMATIC AND MANUAL OVERLOAD PROTECTION SYSTEM (AOPS/MOPS)

The AOPS system features safety equipment that automatically safeguards and protects the crane against overload and 'overturning-moment' when operating by allowing the hook to be pulled away from the crane in a controlled manner so avoiding significant damage. When the MOPS system is activated, if there is the risk of overload, the crane operator is warned to manually operate the winch release. AOPS/MOPS is mandatory for certified offshore cranes that perform ship-to-ship or ship-to-platform lifting operations. Heila offers a turnkey system.

► LOW TEMPERATURE AND ARCTIC SOLUTIONS

An extensive range of options and accessories are available to operate in low temperature conditions. Special steel for use in low temperatures and specific technical solutions for winterisation assure the safe operation of the cranes in the most severe low temperatures and Arctic environmental conditions.

► ATEX / NEC505 HAZARDOUS AREA EXECUTION

Heila offers solutions for use of its cranes in hazardous areas (explosion proof execution). All such cranes are supplied with a dedicated EX-ATEX Declaration of Conformity.

LIFTING DEVICES AND LOAD CONTROL

► HOISTING WINCHES

Heila provides a wide range of winches. From a single line pulling capacity of 500 Kg up to more than 50 metric tons, multiple speeds, multiple drum rope capacities and in accordance with customer requirements. They are equipped with an electric/hydraulic load limiting device that controls the pulling force on the rope and that will not allow the maximum safe working load of the crane to be exceeded. All Heila winches are fitted with non-rotating galvanised and greased steel cables to ensure the best performance in all working conditions.



► PERSONNEL LIFTING COMPLIANT WITH EN 13852-1 OR API-2C

Heila offers its customers a complete range of solutions for personnel lifting that comply with EN 13852-1 or API-2C. Heila can equip its cranes with 'dedicated winches' for personnel lifting or 'dual use winches' that can be used for both cargo handling and personnel lifting.

► CONSTANT TENSION (CT) WINCHES

A Heila constant tension winch system combines a special winch, a customised electronic control system and a dedicated PLC. Constant tension winches are used for marine and offshore lifting operations at sea. The system creates a constant line-pull between the load and the winch. Prior to starting the operation the line-pull is set. It is measured by a load sensor and monitored by the PLC central control system. If the actual value differs from the pre-set value, the winch will pay in or pay out wire rope to maintain the pre-set value. Constant tension winch systems are suitable for pre-tensioning the wire rope used in buoy-laying operations, but also

when positioning and connecting floating pipelines during dredging projects. Moreover, they are perfect for raising and lowering tender boats or deck equipment from a vessel into sea.

► ACTIVE HEAVE COMPENSATION (AHC)

Current offshore and subsea projects require advanced technology to position loads on the seabed for subsea installations or to position them in the air, for instance when servicing wind turbines. An AHC system on the crane compensates for the vessel's motion. Heila supplies tailor-made AHC systems on winches that rely on the input of motion sensors. Responding to the signal from these sensors, the winch pays in or pays out wire rope to keep the load at a constant elevation. An AHC system on a winch responds rapidly and, when combined with active hydraulic accumulators, reduces power consumption significantly.

Options and Accessories for a broad level of customisation

▶ INTEGRATED PULLEY HEAD AND/OR PULLEY BLOCK

When a winch is used rather than a fixed hook, different solutions are required to lift the loads. Heila offers the optimal solution to its customers by integrating either a pulley head or top sheave into the last boom extension. To be able to work with both a winch and a fixed hook, Heila provides a pulley block that can be connected, when required, to the last boom extension hook connection point. As an additional option, Heila can install single line pull or multiple line pull solutions according to the customer's needs.

CONTROL SYSTEM

- Standing platform
- Local control operator panel
- Remote control
- Operator cabin
- Radio remote control

SAFETY AND OPERATION

▶ SEA STATE SELECTOR

Heila marine cranes can be designed to operate in different sea states. To be able to select the type of operation for the different states, the crane is fitted with a sea state selector switch on its control panel (either at a fixed location or as wireless control unit). The sea state selector switch allows the crane to be operated safely and precisely in difficult marine conditions.

▶ ACOUSTIC AND VISUAL ALARMS

Acoustic and visual alarms can be installed on cranes to allow the crane to be operated reliably and safely. A green / yellow / red light is installed on the crane column. This shows, respectively, the 90% / 100% / 110% SWL load being experienced by the crane. In addition to the visual alarm, an acoustic alarm can be installed. Acoustic and visual alarms are mandatory for use on fully IACS certified cranes.

▶ LOAD AND RADIUS INDICATORS

Depending on the type of application and/or in agreement with the customer, Heila can provide specific load and radius indicators that can be displayed on one or more portable remote units or on video screens installed in operator control stations and/or in operator cabins. We can also provide the crane with a visual indication of the loads and 3D controls.

▶ LED FLOODLIGHT

LED floodlights can be fitted to the tip of the crane's boom to illuminate the working area around the crane. Heila offers swivelling or fixed solutions with different power outputs ranging from 100 to 1000 equivalent Watt [W].

▶ LOAD SENSING (LS) SYSTEM

In situations where a more complex hydraulic circuit is used, Heila can fit a main hydraulic control valve block that can be used with load sensing (LS) pumps. This solution increases the efficiency of the hydraulic circuit and reduces both the power loss of the system and the heating of the oil. For the best solution, this feature must be discussed with the customer.

▶ CENTRALISED GREASING SYSTEM

Heila marine cranes have greasing points on all pins and pivot points to keep them operating efficiently and to prevent excessive wear. A 'Manual Central Greasing System' can be installed as an optional feature on all Heila cranes to simplify maintenance and extend the crane's life. On request, an 'Automatic Central Greasing System' can be installed to programmably and automatically grease the crane without any human intervention.

SURFACE TREATMENT AND ANTI-CORROSION SOLUTIONS

▶ FLAME METALLISATION TREATMENT

Flame metallisation is a thermal spray coating process that is used to coat anti-corrosive metals onto surfaces, it is long lasting and highly effective. On request, Heila can thermally spray zinc and aluminium onto all of the crane's structural steel parts providing the highest grade of corrosion protection.

▶ PAINTING AND CUSTOM CRANE COLOUR

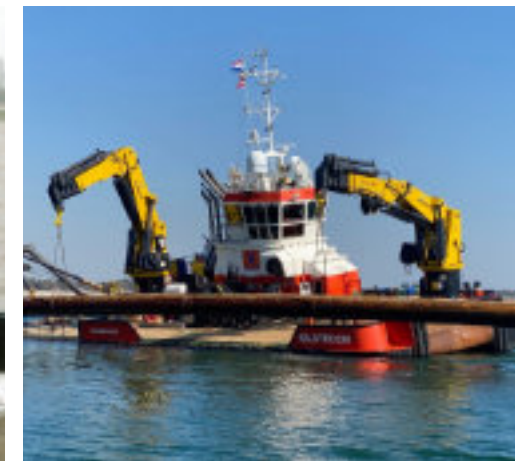
The standard Heila paint system complies with ISO 12944-5 C5 Very High and ISO 12944-9 CX Offshore (successor of the C5M paint system); the standard colour is RAL 1005 "Honey Yellow" combined with RAL 7021 "Black Grey". However, Heila also offers alternative, NORSOK M-501 compliant paint systems, special isocyanate-free paint systems or customer-specific paint systems. All topcoats are available in customer-specified RAL colours.

▶ HYDRAULIC CYLINDER ROD COATING HD4+ AND HD4stars

Heila has improved the corrosion resistance and wear-resistance of its hydraulic cylinder rods with two unique treatments registered under the names HD4+ and HD4stars. These innovative hi-tech solutions efficiently protect the cylinder rods from corrosion and help to protect against leaks, coating peeling and seal wear. (For more information please consult the specific "Heila Cranes Anti-Corrosion Program" brochure).

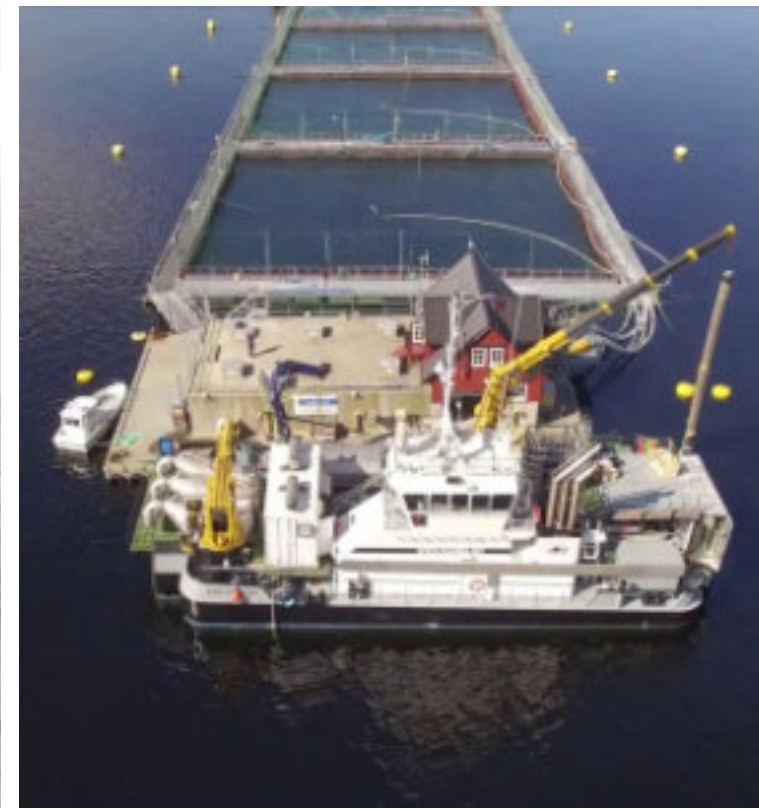
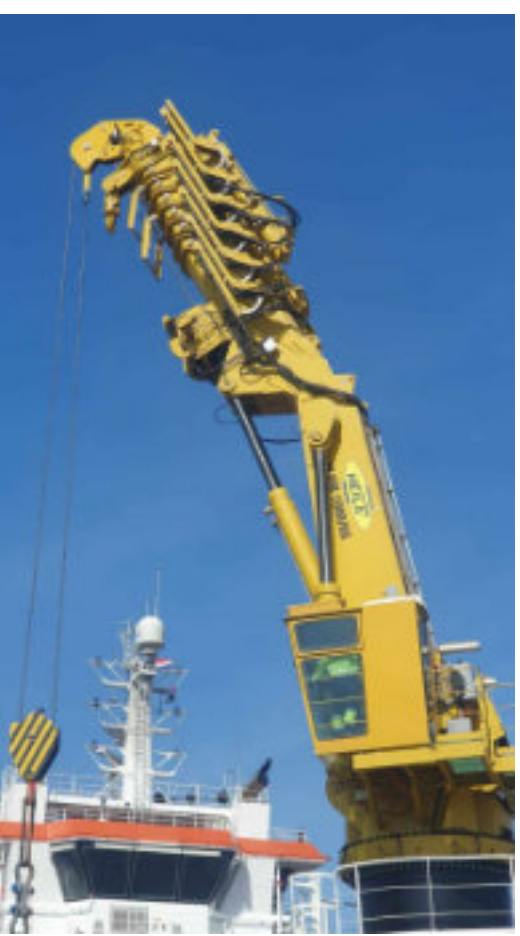


Cranes applications in the Marine and Offshore Industry



Tugs & Workboats & Dredging vessels

Fishing & Aquaculture



Yacht
Support
Vessels



Cranes applications in the Marine and Offshore Industry

Oceanographic Research Vessels



Offshore Oil & Gas and Wind



Navy & Coast Guard



Complete range of Heila cranes

HORIZONTAL LOAD HLRM CRANES

Crane model	nr of extensions		Length of boom (m) and crane lifting capacity (kg)								Revision – 1 Juni 2024
			3m	4m	5m	6m	7m	8m	9m	10m	
HLRMS 50	3S	m	3,60		5,55		7,52		9,85		
		Kg	1500		1500		1500		1500		
HTR 50/9.3	1S	m		4,84					9,30		
		Kg		10000					5000		
HTR 50/11	2S	m	3,80				7,3			10,8	
		Kg	11500				6000			4000	

The HLM and HLRM, HRM and HRMS and HR series cranes described in this catalogue are the core products of Heila. However, Heila has a highly skilled team of engineers that are able to design complex, state-of-the-art cranes to be customised with our wide range of options and accessories.



BULK MATERIAL AND LIVE STOCKS MANIPULATOR
Working radius up to 44m.

ENGINEERING CAPABILITY

Heila has significant experience in designing and building all of the cranes mentioned below. Heila also has highly specialised knowledge and experience in designing and building cranes suitable for Arctic conditions and ATEX environments, as well as specialised dredging cranes (DRG) that are able to operate at extreme heel and trim angels.

Heila has in-house the capability to build the crane safety & control systems, and is able to develop PLC software. It is therefore able to support and maintain the crane's safety & control system throughout the crane's life.



GM 800 GAS MANIPULATOR
This special Gas Manipulator moves gasses from A to B. Working radius up to 49m.



HTR50
Especially for yachts.



Fixed



Telescopic



Knuckle - Telescopic



Fully foldable



Knuckle



Truck crane

Fixed boom cranes - HMR-F

40 tm -> to be customised

- Characteristics:**
- Marine offshore crane
 - Continuous slewing
 - Stiff boom type
 - Low maintenance
 - Easy to adapt for ATEX environments

Telescopic cranes - HMR-S

25 tm -> 1,000 tm

- Characteristics:**
- Marine offshore crane
 - Continuous slewing
 - Crane boom is extendable, which enlarges the working area

Telescopic knuckle boom cranes - HLRM

80 tm -> 1,500 tm

- Characteristics:**
- Marine offshore crane
 - Continuous slewing
 - Crane boom is both knuckled and extendable, enlarging the working area
 - High manoeuvrability
 - Compact storage configuration
 - Possibility to use a fixed hook
 - Maximum capacity at short outreach

Fully foldable telescopic cranes – HLM, HLRM

3 tm – 90 tm

- Characteristics:**
- Marine offshore crane
 - Crane boom is knuckled, foldable and extendable, which enlarges the maximum working area
 - High manoeuvrability
 - Compact storage configuration
 - Possibility to use a fixed hook
 - Maximum capacity at short outreach

Knuckle cranes – HR-2BJ

20 tm -> to be customised

- Characteristics:**
- Marine offshore crane
 - Knuckle boom
 - Maximum capacity at a wide range of outreaches, large working area
 - Easy to adapt for ATEX environments
 - Low maintenance

Truck crane - HWR

Capacity per customer requirement special applications

- Characteristics:**
- Top seat with joystick and pedals
 - Wireless remote control, fully proportional
 - Delivered with truckbase including stabilizer cylinders
 - Double hydraulic circuit with double inlet filter
 - large operator platform
 - extra large stabilizers



REPRESENTATIVE



June 2024

Disclaimer: No rights can be derived from the dates and information in this brochure. Information and dates are subject to change without notice.

Heila Cranes Nederland B.V.

Stationspark 730, unit 60, 3364 DA Sliedrecht
The Netherlands
Phone +31 (0)416 651012
info@heila.com | www.heila.com

Heila Cranes S.p.A.

Via Romana, 34/6 - 42028 Poviglio (R.E)
Italy
Phone +39 0522 966352
info@heila.com | www.heila.com